



COMMISSIONERS OF CUMBERLAND COUNTY

Vector Control Weights & Measures
310 Allen Road Suite 701
Carlisle, Pennsylvania 17013
717-240-6349
717-240-7754 fax
www.ccpa.net/vector

Gary Eichelberger
Chairman

Jean Foschi
Vice-Chairman

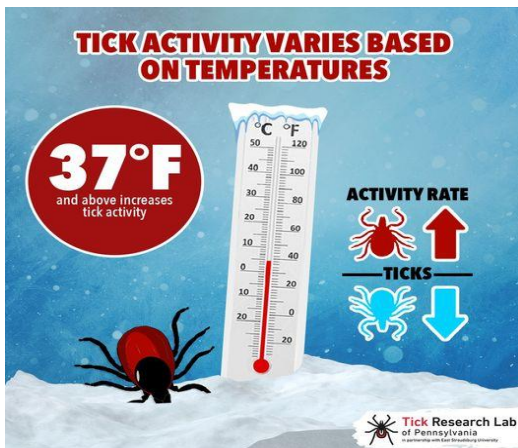
Vincent T. DiFilippo
Secretary

Monday, January 04, 2021

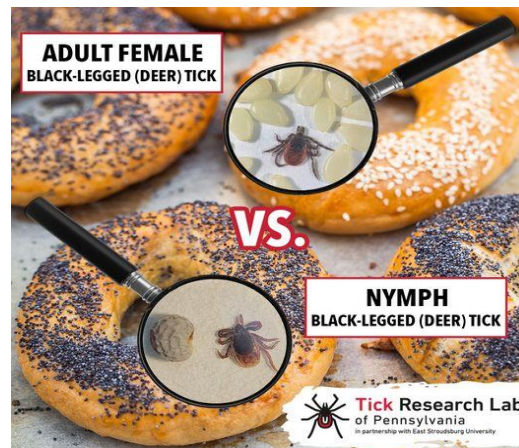
With snow on the ground you would think ticks would be gone for the season. Although snow can make it harder for you to come in contact with a tick, due to being outside less. However, if you frequent walks in the woods or are a hunter, ticks tend to be more active in temperatures above 37°F. Pictured below is a graphic from PA Tick Labs to illustrate this fact. The other graphic shows the actual size of the adult females and nymphs of the black-legged ticks. The stage of life most active from November through March is the adult black-legged tick. It is a commonly believed myth that a harsh winter will kill off most of the ticks, this is not true however. During the winter on days that are too cold to survive on the surface, they tunnel under ground. This keeps them warm enough to survive and allows them to reemerge as soon as temperatures reach above 37°F.

Cumberland County Vector Control captured adult black-legged ticks up until mid-December in 2019. Although we are not doing sampling this fall/winter we will pick back up sample in the spring. At that time we will be looking for nymphs of the black-legged tick which are most active at the end of April through July.

More information on ticks can be found on our Facebook page or PA Tick Labs Facebook page.



The graphic above from PA Tick Labs illustrates the activity level of a tick above and below 37°F.



The graphic above from PA Tick Labs illustrates the size of an adult black-legged tick, as well as the nymph of a black-legged tick.